

Quick & Easy to install

Step 1

Fix front plate to mounting box.

Step 2

Wire modules.

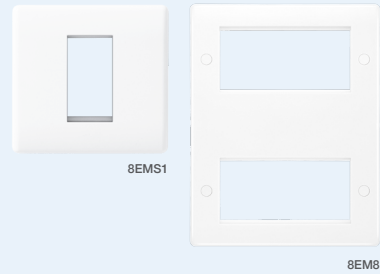
Step 3

Slot the module on the frame and click into place.



Front Plates – White Moulded

- Manufactured to BS 5733
- Anti-microbial certified
- Aperture sizes:
1 Module: 25 x 50mm, 2 Module: 50 x 50mm, 4 Module: 100 x 50mm



Product Code	Description	Inner Carton	Outer Carton
8EMS1	1 module – square	20	200
8EMS2	2 module – square	10	100
8EMR4	4 module – rectangular	10	100
8EM8	2 x 4 module, double stack plate	10	100

Front Plates – Metal Clad

- Manufactured to BS 5733
- Fitted with earth terminal
- Aperture sizes:
1 Module: 25 x 50mm, 2 Module: 50 x 50mm, 4 Module: 100 x 50mm



Product Code	Description	Inner Carton	Outer Carton
MC5EMS1	1 module – square	20	200
MC5EMS2	2 module – square	10	100
MC5EMR4	4 module – rectangular	10	100

Front Plates – Part M

- Manufactured to BS 5733
- Clip on cover with concealed fixing screws
- Aperture sizes:
1 Module: 25 x 50mm, 2 Module: 50 x 50mm, 4 Module: 100 x 50mm



Product Code	Description	Inner Carton	Outer Carton
PMEMS1	1 module – square	20	200
PMEMS2	2 module – square	10	100
PMEMR4	4 module – rectangular	10	100

Front Plates – Nexus Metal

- Manufactured to BS 5733
- Fitted with earth terminal
- Aperture sizes:
1 Module: 25 x 50mm, 2 Module: 50 x 50mm, 4 Module: 100 x 50mm



Brushed Steel	Polished Chrome	Black Nickel	Description	Inner Carton	Outer Carton
NBSEMS1	NPCEMS1	NBNEMS1	1 module – square	20	200
NBSEMS2	NPCEMS2	NBNEMS2	2 module – square	10	100
NBSEMR4	NPCEMR4	NBNEMR4	4 module – rectangular	10	100

Front Plates – Screwed Flatplate

- Manufactured to BS 5733
- Fitted with earth terminal
- Anti-fingerprint lacquer
- Aperture sizes:
1 Module: 25 x 50mm, 2 Module: 50 x 50mm, 4 Module: 100 x 50mm



Brushed Steel	Description	Inner Carton	Outer Carton
SBSEMS1	1 module – square	20	200
SBSEMS2	2 module – square	10	100
SBSEMR4	4 module – rectangular	10	100

Front Plates – Screwless Flatplate

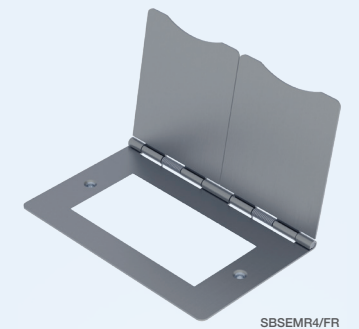
- Manufactured to BS 5733
- Fitted with earth terminal
- Aperture sizes:
1 Module: 25 x 50mm, 2 Module: 50 x 50mm, 4 Module: 100 x 50mm



Brushed Steel	Polished Chrome	Black Nickel	Description	Inner Carton	Outer Carton
FBSEMS1	FPCEMS1	FBNEMS1	1 module – square	20	200
FBSEMS2	FPCEMS2	FBNEMS2	2 module – square	10	100
FBSEMR4	FPCEMR4	FBNEMR4	4 module – rectangular	10	100

Front Plates – Spring Hinged Cover

- Ideal for floor sockets – an easy and convenient way to access mains electricity in busy locations where wall space is restricted
- Slimline screwed ultra flat clip on/off front plate
- Sprung hinges for durability
- Fitted with earth terminal
- Anti-fingerprint lacquer



Brushed Steel	Description	Inner Carton	Outer Carton
SBSEMS2/FR	2 module – square	10	100
SBSEMR4/FR	4 module – rectangular	10	100